

Whether it's viscous, highly mobile or foaming.
The pipette for difficult media.



Transferpettor

F I R S T C L A S S · B R A N D

H_2SO_4

Silicone oil

ISOPROPANOL

Blood

Glycerine

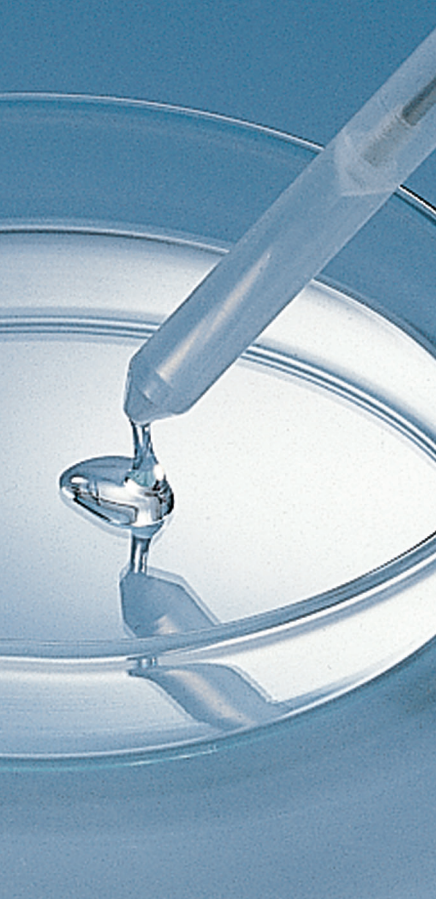
Ethanol

Mineral oil

The **Transferpettor** is ideal for liquids when air displacement pipettes just won't work.

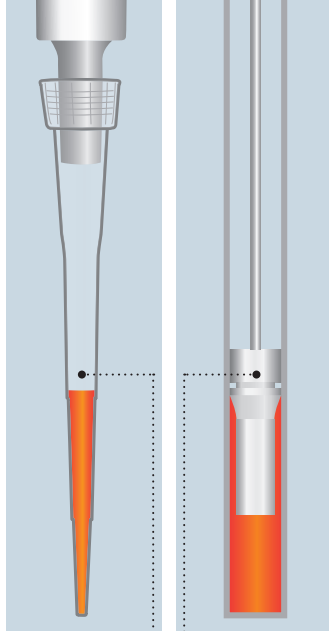
By virtue of its positive displacement principle, the **Transferpettor** is the right tool for your most demanding pipetting operations. Convenient and tidy pipetting of difficult media – with highest precision.

- Viscous
- Highly mobile
- Foaming
- High density
- High vapor pressure



This is how it works

Convenient pipetting of difficult media.



Air-interface principle

Positive displacement principle



Media which tend to foam, such as tenside solutions, pose no problem to the Transferpettor.



Even media with high vapor pressure (up to 500 mbar) such as alcohols, ether and hydrocarbons can be pipetted simply, reliably and with the highest accuracy.



The Transferpettor is ideal for pipetting highly viscous media, such as highly concentrated protein solutions, oils, resins and fats up to a viscosity of 140,000 mm²/s. Media with high density up to 13.6 g/cm³ such as glycerin, mercury, sulfuric acid, etc. can be pipetted without the need to recalibrate.

Transferpettor, Digital-adjustable, DE-M marking

Volume µl	A* ≤ ± % µl	CV* ≤ % µl	Subdiv. µl	Color code	Cat. No.
2.5 - 10	1.0 0.1	0.8 0.08	0.01	orange	7018 07
5 - 25	0.8 0.2	0.5 0.125	0.1	2 x white	7018 12
10 - 50	0.6 0.3	0.4 0.2	0.1	green	7018 17
20 - 100	0.6 0.6	0.4 0.4	0.1	blue	7018 22
100 - 500	0.5 2.5	0.2 1.0	1.0	green	7028 04
200 - 1000	0.5 5.0	0.2 2.0	1.0	yellow	7028 06
1000 - 5000	0.5 25.0	0.2 10.0	10.0	red	7028 10
2000 - 10000	0.5 50.0	0.2 20.0	10.0	orange	7028 12

Transferpettor, Fixed-volume, DE-M marking

Volume µl	A* ≤ ± % µl	CV* ≤ % µl	Color code	Cat. No.
1	4.0 0.04	4.0 0.04	white	7018 42
2	2.5 0.05	2.0 0.04	white	7018 44
5	1.0 0.05	0.8 0.04	white	7018 53
10	1.0 0.1	0.8 0.08	orange	7018 58
20	0.8 0.16	0.5 0.1	black	7018 63
25	0.8 0.2	0.4 0.1	2 x white	7018 64
50	0.6 0.3	0.4 0.2	green	7018 68
100	0.6 0.6	0.4 0.4	blue	7018 73
200	0.5 1.0	0.2 0.4	red	7018 78

* Calibrated to deliver (TD, Ex). Error limits according to the nominal capacity (= maximum volume) indicated on the instrument, obtained with instrument and distilled water at equilibrium with ambient temperature at 20 °C, and with smooth, steady operation. The error limits are within the limits of DIN EN ISO 8655-2. DE-M marking. A = Accuracy, CV = Coefficient of variation

BRAND®, BRAND. For lab. For life.® and the BRAND word and figurative mark are registered trademarks of BRAND GMBH + CO KG, Germany.

Our technical literature is intended to inform and advise our customers. However, the validity of general empirical values, and of results obtained under test conditions, for specific applications depends on many factors beyond our control. Please appreciate, therefore, that no claims can be derived from our advice. The user is responsible for checking the appropriateness of the product for any particular application.

California Residents: For more information concerning California Proposition 65, please go to www.brand.de/calprop65

Subject to technical modification without notice. Errors excepted.

BRAND GMBH + CO KG · P.O. Box 1155 · 97861 Wertheim · Germany

Tel.: +49 9342 808-0 · Fax: +49 9342 808-98000 · E-Mail: info@brand.de · Internet: www.brand.de

Transferpettor-Station

The Transferpettor-Station keeps the instruments and accessories ready to hand at the workplace.

The color code clearly identifies which belongs to what, to avoid any confusion.

Accommodates 4 instruments up to 200 µl with accessories. Pack of 1.

Cat. No. **7019 60**



Accommodates 2 instruments 0.5 to 10 ml with accessories. Pack of 1.

Cat. No. **7028 90**